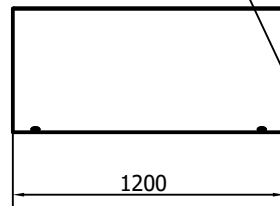
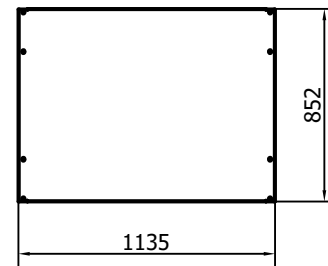
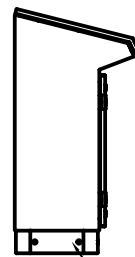
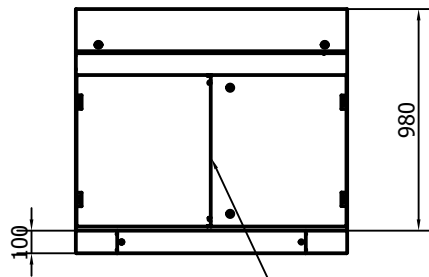
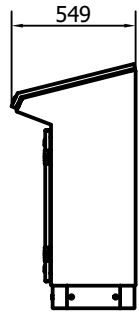
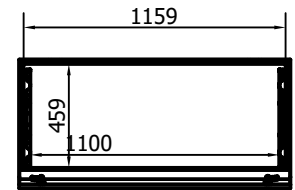
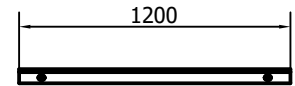


SLOPED DOOR DETAIL



LVE404

PLINTH H100 RAL7009

LM1214

CONSOLE H980xL1200xP400 RAL7035

LM: compact console, with plain 14° sloping top, complete with a system to keep the door open. Features and dimensions as LVE model. The base, prepared for plinth mounting, is equipped with cable inlet plate in the bottom and a screwed Mpl in galvanized steel 2,0 mm.

